

**Ovarian Cancer Antigen CA125  
ELISA Kit Protocol**

(Cat. No.:EK-310-13)

**PHOENIX PHARMACEUTICALS, INC.**

**330 Beach Road, Burlingame CA**

**Tel: 650-558-8898 Fax: 650-558-1686**

**E-Mail: [info@phoenixpeptide.com](mailto:info@phoenixpeptide.com)**

**[www.PhoenixPeptide.com](http://www.PhoenixPeptide.com)**

## **INTENDED USE**

For the quantitative determination of the Cancer Antigen CA125 concentration in human serum. **FOR RESEARCH ONLY. NOT FOR USE IN DIAGNOSTIC PROCEDURES**

## **LIMITATIONS OF THE PROCEDURE**

1. Reliable and reproducible results will be obtained when the assay procedure is carried out with a complete understanding of the package insert instructions and with adherence to good laboratory practice.
2. The wash procedure is critical. Insufficient washing will result in poor precision and falsely elevated absorbance readings.
3. Serum samples demonstrating gross lipemia, gross hemolysis, or turbidity should not be used with this test.

## TABLE OF CONTENT

Introduction and Protocol Overview	4
Principle of the Test	4
Storage	5
List of Components	5
Specimen Collection and Preparation	6
Reagent Preparation	6
Assay Procedure	6
Calculation of Results	7
Example of Standard Curve	8
Expected Values and Sensitivity	9
References	9

## **INTRODUCTION AND PROTOCOL OVERVIEW**

Cancer Antigen 125 (CA125) is a surface antigen associated with epithelial ovarian cancer. In serum, CA125 is associated with a high molecular weight glycoprotein. Published studies have indicated that elevated serum CA125 levels can be found in individuals with serious endometroid, clear-cell and undifferentiated ovarian carcinoma.

The serum CA125 concentration is greater than 35 units per ml in 60% of women with ovarian cancer and >80% of patients with disseminated ovarian cancer. The serum CA125 is elevated in 1% of normal healthy women, 3% of normal healthy women with benign ovarian diseases, 6% of patients with non-neoplastic conditions (including but not limited to first trimester pregnancy, menstruation, endometriosis, uterine fibrosis, acute salpingitis, hepatic diseases and inflammation of peritoneum, pericardium or pleura). Serial determinations of serum CA125 as well as pelvic examination increase the test specificity. Serum CA125 concentration may be useful in monitoring treatment and distinguishing between good response to treatment and progressive malignant disease with poor therapeutic response. To date, CA125 is the most sensitive marker for residual epithelial ovarian cancer. CA125 may also be elevated in patients with lung, cervical, fallopian tube, and uterine cancer and endometriosis.

## **PRINCIPLE OF THE TEST**

The CA125 ELISA test is based on the principle of a solid phase enzyme-linked immunosorbent assay. The assay system utilizes a monoclonal antibody directed against a distinct antigenic determinant on the intact CA125 molecule is used for solid phase immobilization (on the microtiter wells). A rabbit anti-CA125 antibody conjugated to horseradish peroxidase (HRP) is in the antibody-enzyme conjugate solution. The test sample is allowed to react simultaneously with the two antibodies, resulting in the CA125 molecules being sandwiched between the solid phase and enzyme-linked antibodies. After incubation at 37°C for 90 minutes, the wells are washed with Wash Buffer to remove unbound-labeled antibodies. A solution of TMB Reagent is added and incubated for 20 minutes, resulting in the development of a blue color. The color development is stopped with the addition of Stop Solution changing the color to yellow. The concentration of CA125 is directly proportional to the color intensity of the test sample. Absorbance is measured spectrophotometrically at 450 nm.

**CAUTION:** Phoenix Pharmaceuticals guarantees that its products conform to the information contained in this publication. The purchaser must determine the suitability of the product for its particular use and establish optimum sample concentrations.

## **STORAGE**

Unopened test kits should be stored at 2-8°C upon receipt and the microtiter plate should be kept in a sealed bag with desiccants to minimize exposure to damp air. Opened test kits will remain stable until the expiration date shown, provided it is stored as described above. A microtiter plate reader with a bandwidth of 10 nm or less and an optical density range of 0-2 OD or greater at 450 nm wavelength is acceptable for use in absorbance measurement. **DO NOT FREEZE**

## **LIST OF COMPONENTS**

### **Materials Provided with the Kit:**

- Murine Monoclonal anti-CA125 coated microtiter plate with 96 wells.
- Enzyme Conjugate Reagent, 13 ml
- CA125 reference standards containing; 0, 15, 50, 100, 200, and 400 Unit/ml of CA125, 1 ml each, ready to use.
- Wash Buffer Concentrate (20X), 50 ml
- TMB Reagent (One-Step), 11 ml
- Stop Solution (1N HCl), 11 ml

### **Materials required but not provided:**

- Precision pipettes and tips: 100 µl
- Disposable pipette tips.
- Distilled water.
- Vortex mixer.
- Absorbent paper or paper towel.
- Microtiter plate reader.
- Graph paper.

## SPECIMEN COLLECTION AND PREPARATION

Serum should be prepared from a whole blood specimen obtained by acceptable medical techniques. This kit is for use with serum samples without additives only.

## REAGENT PREPARATION

1. All reagents should be brought to room temperature (18-25°C) before use.
2. To prepare Wash Buffer (1X): Add 50 ml of Wash Buffer (20X) to 950 ml of DI water. The diluted Wash Buffer is stable at 2-8°C for 30 days. Mix well before use. Note: Any crystals that may be present due to high salt concentration must be redissolved at room temperature before making the dilution.

## ASSAY PROCEDURE

1. Secure the desired number of coated wells in the holder. Dispense 100 µl of CA125 standards, specimens, and controls into the appropriate wells.
2. Dispense 100 µl Enzyme Conjugate Reagent into each well.
3. Mix gently for 30 seconds. It is very important to have a complete mixing in this setup.
4. Incubate at 37°C for 90 minutes.
5. Remove the incubation mixture by emptying the plate content into a waste container.
6. Rinse and empty the microtiter plate 5 times with Wash Buffer (1X).
7. Strike the microtiter plate sharply onto absorbent paper or paper towels to remove all residual water droplets.
8. Dispense 100 µl of TMB Reagent into each well. Gently mix for 10 seconds. Incubate at room temperature, in the dark, for 20 minutes.
9. Stop the reaction by adding 100 µl of Stop Solution to each well.
10. Gently mix for 30 seconds. **It is important to make sure that all the blue color changes to yellow color completely.**
11. Read the optical density at 450 nm with a microtiter plate reader **within 15 minutes.**

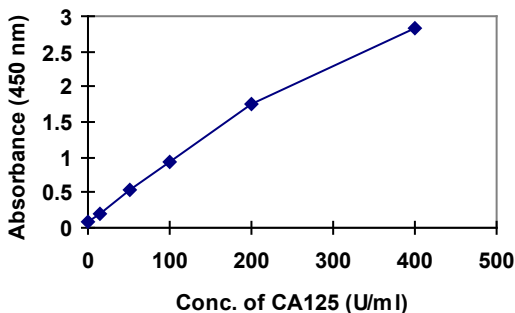
## **CALCULATION OF RESULTS**

1. Calculate the average absorbance values (A450) for each set of reference standards, control, and samples.
2. Construct a standard curve by plotting the mean absorbance obtained for each reference standard against its concentration in U/ml on linear graph paper, with absorbance on the vertical (y) axis and concentration on the horizontal (x) axis.
3. Using the mean absorbance value for each sample, determine the corresponding concentration of CA125 in U/ml from the standard curve.

**EXAMPLE OF STANDARD CURVE**

Results of a typical standard run with optical density readings at 450nm shown in the Y axis against CA125 concentrations shown in the X axis. This standard curve is for the purpose of illustration only, and should not be used to calculate unknowns. Each user should obtain his or her own data and standard curve in each experiment.

CA125 Values (U/ml)	Absorbance (450 nm)
0	0.071
15	0.205
50	0.551
100	0.936
200	1.746
400	2.824





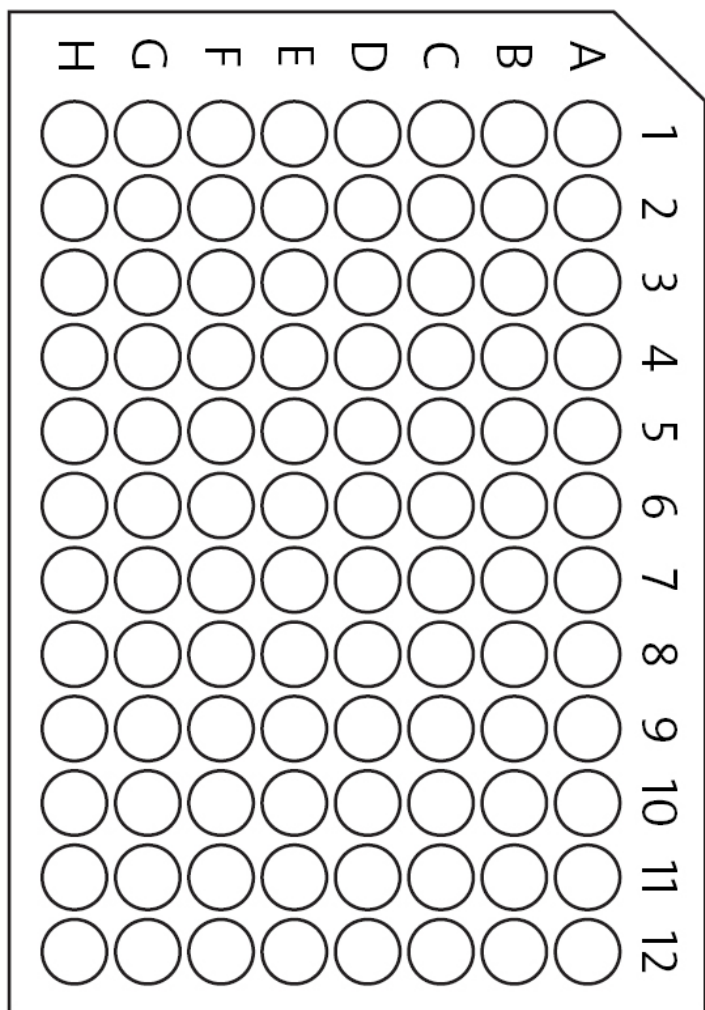
## **EXPECTED VALUES AND SENSITIVITY**

Healthy women are expected to have CA125 assay values below 35 U/ml. The minimum detectable concentration of CA125 in this assay is estimated to be 5 U/ml.

## **REFERENCES**

1. Engall, E., *Methods in Enzymology*, Volume 70, Van Vunakis, H. and Langone, J. J. (eds.), Academic Press, New York, 419-492(1980).
2. Uotila, M., Ruoslahti, E. and Engvall, E., *J. Immunol. Methods*, 42, 11-15 (1981).
3. Kenemans P, Yedema CA, Bon GG, von Mensdorff-Pouilly S. Ca125 in gynecological pathology a review. *Eur J Obstet Gynecol* 1993;49:115-124.
4. Saksela F. Prognostic markers in epithelial ovarian cancer. *Intl J Gynecol Pathol* 1993;12:156-161.
5. Farghaly SA. Tumor markers in gynecologic cancer. *Gynecol & Obstet Invest* 1992;34:65-72.
6. Welander CE. What do CA 125 and other antigens tell us about ovarian cancer biology. *Acta Obstet Gynecol Scand Sup* 1992;155:85-93.
7. McGowan L. Pathology of the ovary. *Curr Opin on Obstet Gynecol* 1991;3:580-586.
8. Niloff JM. Ovarian malignancy. *Curr Opin on Obstet Gynecol* 1991;3:66-72.
9. Olt G, Berchuck A, Bast RC. The role of tumor markers in gynecologic oncology. *Obstet Gynecol Survey* 1990;45-:570-577.
10. Diez M, Cerdan FJ, Ortega MD, Torres A, Picardo A, Balibrea JL. Evaluation of serum CA125 as a tumor marker in non-small cell lung cancer. *Cancer* 1991;67:150-154.
11. Niloff JM, Klug TL, Schaetzl E. Elevation of serum CA125 in carcinomas of the fallopian tube, endometrium, and endocervix. *AM J. Obstet Gynecol* 1984; 148:1057

**ASSAY DIAGRAM**



**NOTES**